

# Construction Schedule

---

**T**HIS SCHEDULE reflects our most up-to-date estimate. It is our sincere wish to have as much of the Club open as possible by the summer of 2008. As we all know construction on Martha's Vineyard can be a frustrating process. We have hired a construction company with a proven record of completing large commercial projects on time and we will all continue to work diligently to ensure the Club is completed as scheduled. You will receive construction updates throughout the winter to stay informed of our progress.

## THE BOATHOUSE

### Summer 2007

Official closing of restaurant. Removal of all kitchen equipment and restaurant contents. Removal of non-structural walls and sub floors. Complete engineering evaluation and final project plans in anticipation of early September start date.

### September – October

Tear down portion of building required to construct new foundation. Begin renovation to remaining structure and reframe new 2nd and 3rd floors as well as roof line. Begin construction of docks.

### November – December

Continue framing and exterior finishes including installation of windows and doors. Begin installation of all rough mechanical systems and subcontractor work.

### January – February

All exterior finishes and roughing completed. All millwork and interior finishes in progress. Flooring and tile work installed.

### March – April

Interior millwork completed. All interior finishes in progress. Installation of kitchen and storage facilities.

### May – June

All interior finishes completed. Trim out all electrical, plumbing and HVAC. Outfitting and decorating of Boathouse facilities. Complete exterior site work and docks. Club staff begins training and practice runs.

### July 2008

Grand Opening

## FIELD CLUB

### Summer 2007

Preliminary site clearing, grading and installation of utilities.

### September – October

Completion of rough grading. Construction of pond, installation of foundations and building utilities. Begin framing and site work including parking areas and tennis courts

### November – December

Framing in progress – Begin exterior finishes and installation of windows and doors. Site work and Tennis Courts in progress.

### January – February

Evaluate progress to date and direct all efforts towards completing tennis, lawn game areas, and pool complex. All other project facilities in progress.

### March – April

Site work in progress including substantial completion of Tennis Courts, Paddle Tennis, pool area and parking. Begin landscaping of areas scheduled for summer 2008 opening

### May – June

Completion of Tennis, Paddle Tennis, Lawn Games area, and related facilities.

### July 2008

Partial opening of all available amenities.

### September – March 15th

Completion of all club facilities

### May 2009

Grand Opening Memorial Day

*Farewell to the Old Navigator —  
Construction begins on The Boathouse.*





## DEAR MEMBERS AND FRIENDS OF THE BOATHOUSE

**T**HE BOATHOUSE is a busy place these days and we are pleased to share with you some exciting updates to the facilities and news on recent happenings at the Club. As we have now begun the building phase of the project the office is alive with project meetings and all the talk is of starting construction and getting the Club open.



### Ladies Lunch at Catch at the Terrace

*Ina Andre / Membership Services*

**O**N A GLORIOUS summer day, Catch at the Terrace provided the perfect setting for a special ladies luncheon for Boathouse Members and their guests. The room quickly filled with conversation, as friends caught up with friends and new introductions were made before sitting down for a very special lunch prepared by Executive Chef Chris Parsons and his team. Special thanks to Sommelier Richard Jardin who shared his summer champagne cocktail recipes with us. French 77 received the most praise, so we have included the recipe below.

#### French 77

1 oz. St. Germain • 4 oz Brut Champagne  
A Splash of Fresh Squeezed Lemon Juice  
Finish With a Lemon Twist

Over the last few months we have been working with our architect, Patrick Ahearn, landscape architect, Dan Gordon of Dan K. Gordon Associates and our builder, Geoff Caraboolad of Metric Construction of Boston. We are especially excited about the improvements to the full service Spa facility and expanded Pool complex which now includes a dedicated adult lap pool. These plans reflect some significant improvements to the facilities based on Members' feedback and our total commitment to making the Boathouse Club the premier facility of its kind on Martha's Vineyard.

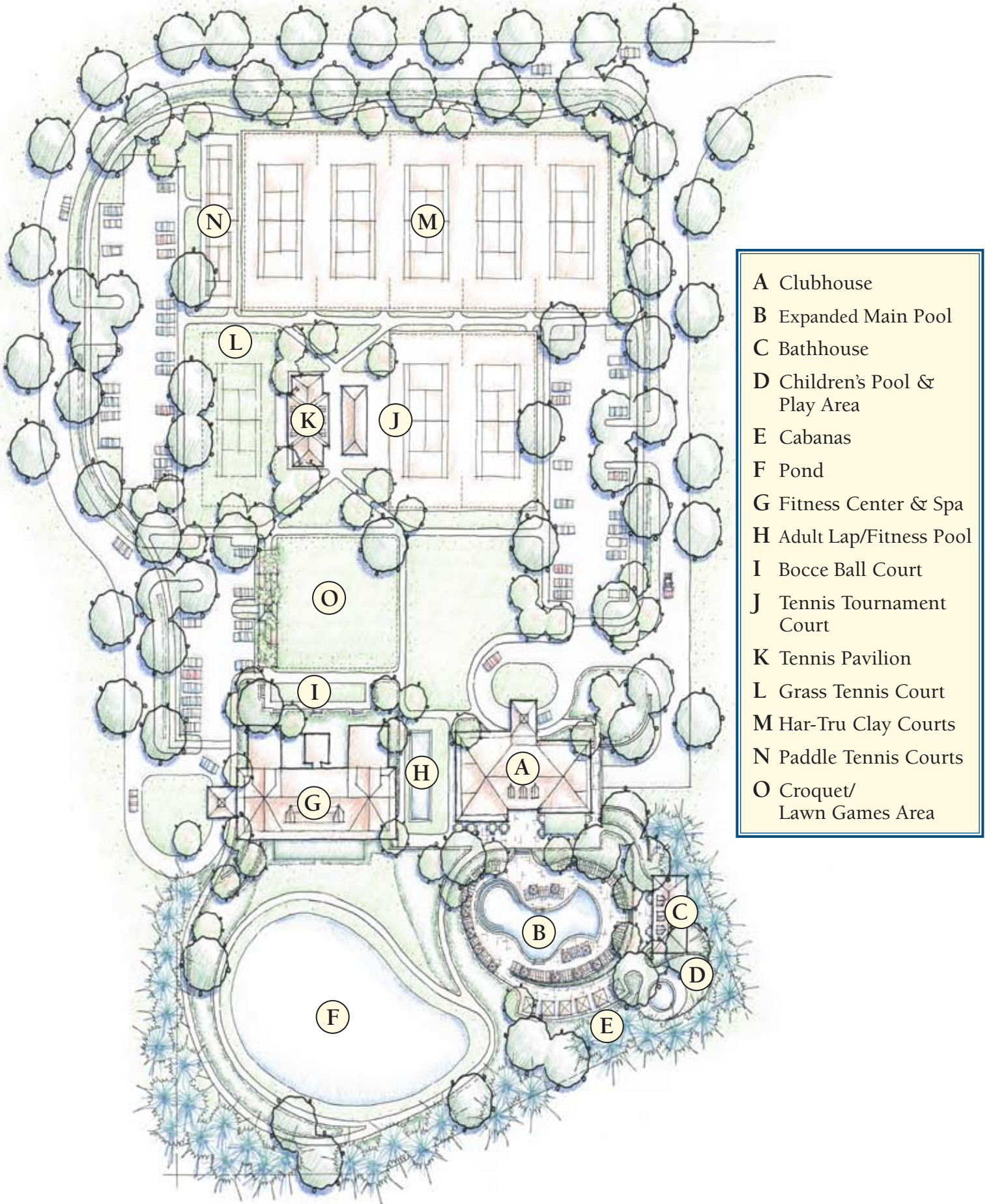
It was gratifying to see so many Members and guests at the July 7th and August 11th receptions at the Daniel Fisher House in Edgartown. This summer we planned a full schedule of events designed to provide an opportunity to meet old friends and get to know other Members of the Club. As we looked around and saw over 200 attendees at each reception enjoying the good company and fine food and wine, we had to judge the events complete successes. We look forward to continuing to meet new Members and guests at future events.

The event we are all looking forward to is the opening of the Club next summer. We have included a construction timeline to advise you of our anticipated construction schedule. We trust you will enjoy this summer's update on the facilities and construction and we will keep you apprised on our progress in the months ahead.

With Kind Regards,  
*Gerret Conover*  
*Arthur Halleran*  
*Tom LeClair*  
*Dan Stanton*



# Field Club Updated Site Plan



- A Clubhouse
- B Expanded Main Pool
- C Bathhouse
- D Children's Pool & Play Area
- E Cabanas
- F Pond
- G Fitness Center & Spa
- H Adult Lap/Fitness Pool
- I Bocce Ball Court
- J Tennis Tournament Court
- K Tennis Pavilion
- L Grass Tennis Court
- M Har-Tru Clay Courts
- N Paddle Tennis Courts
- O Croquet/  
Lawn Games Area

# Expanded Pool Complex



**T**HE POOL will be an important amenity at the Club and we want to ensure that it provides the perfect experience for all of our Members. Over the last few months we have worked with our design team to make some significant changes. One of the most exciting improvements is the addition of an adult lap/exercise pool. This three lane pool will be adjacent to the fitness facility and offer convenient access for Members who like to swim laps, use it as part of an exercise program or prefer a relaxing spot away from the main pool. The main pool has been expanded with a zero entry feature. Often referred to as beach entry, this design offers the advantage of entering the pool by means of a gradual slope into the water without

the use of stairs or ladders. The bluestone deck area has been expanded to allow for more chaise lounge chairs and umbrellas. Cabanas will be available to offer privacy and the opportunity to relax out of the sun. The poolside grill restaurant will have indoor seating as well as outdoor seating on the patio overlooking the pool and a convenient walk-up window for quick snacks and drinks. For families with young children there is a separate children's pool and play area. Surrounded with mature and beautiful landscaping the pool complex will offer Members a truly relaxing area for all the family to enjoy.

